



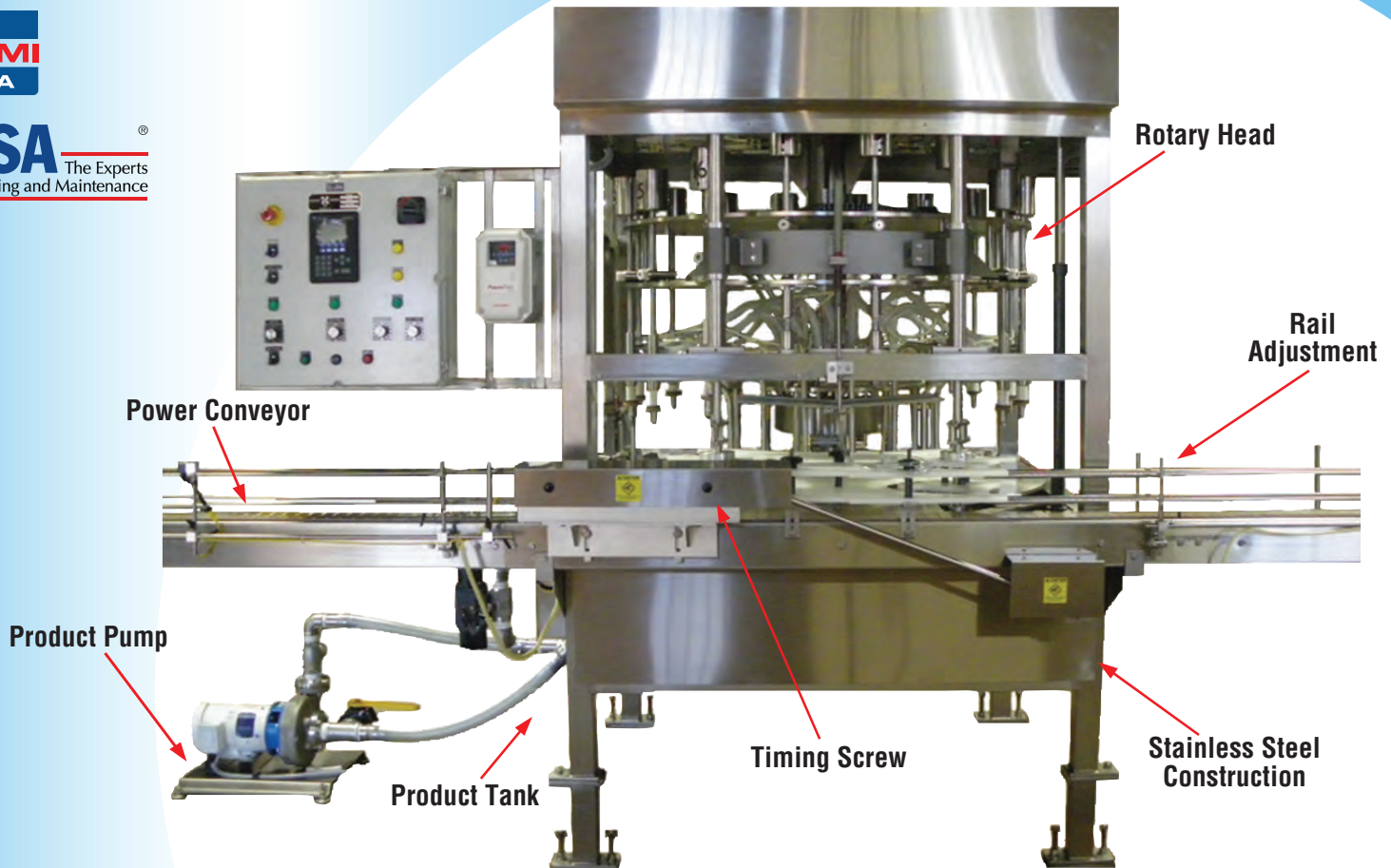
# Packaging Dynamics, Ltd.

35B Carlough Road, Bohemia, New York 11716  
Tel: 631.563.4499 • Fax: 631.563.4893

## AUTOMATIC ROTARY LIQUID FILLER



**ISSA**®  
The Experts  
on Cleaning and Maintenance



### Features

- Nema 4 Electric Package
- 316 Stainless Steel Contact Parts
- AC Driven Pump
- One Set of Change Parts
- 12 ft. Variable Speed Conveyor System
- Heavy duty construction
- Drip Tray with Safety Sensor Shut Off
- Timing screw In-Feed System
- All Machine Controls
- Stainless Steel Top and Bottom Guards
- Electric Eye Pump Speed Controls
- Computer Aided Designed & Machined Change Parts
- Toolless Quick Change Rail System
- Free Product Testing
- Digital Speed Indicator
- Container Count Indicator

### Options

- Container Cleaning Systems
- Platform or Pocket Type
- Single Source Supply and Line Intergration Available
- Color Coordinated Change Parts
- Extended Frame Construction for Bottom Up Filling
- Sanitary Connections
- Clutch Alignment Assemblies
- Allen Bradley HMI Interface and PLC
- Nozzle Centering Devices
- Nema 7, Explosion-Proof Intrinsically Safe Electrics
- Safety Interlocks
- Synchronization with other Equipments
- Fiberglass Resin Coating
- Nozzle Vacuum Drip Removal System



# Packaging Dynamics, Ltd.

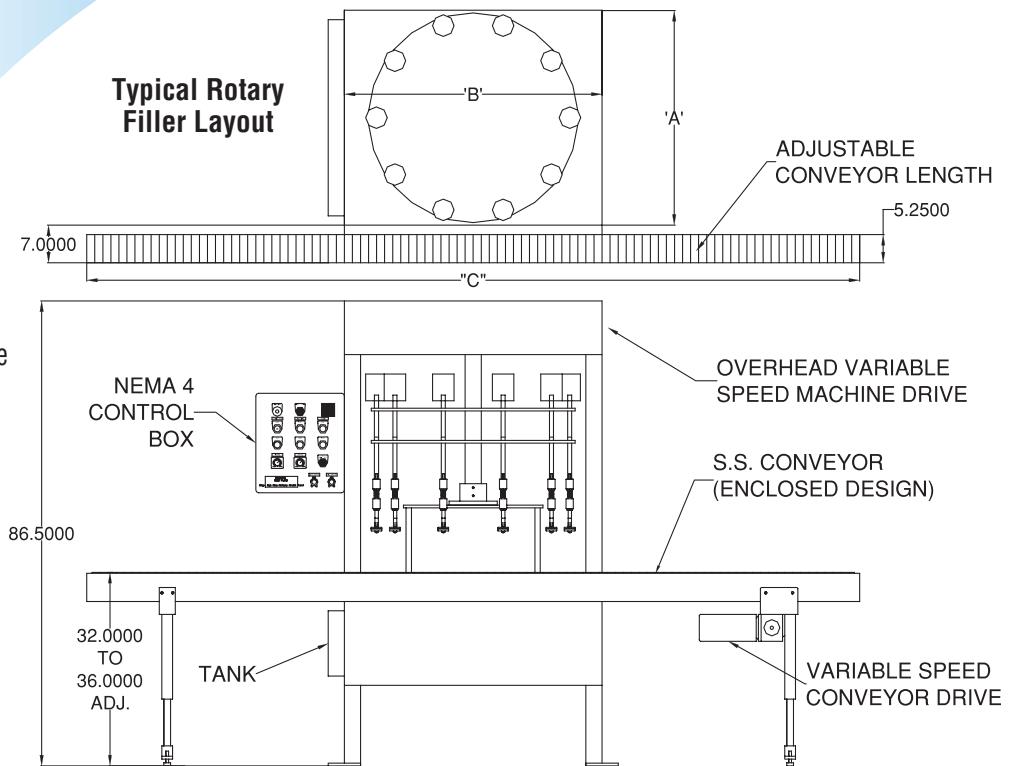
35B Carlough Road, Bohemia, New York 11716  
Tel: 631.563.4499 • Fax: 631.563.4893

## DESIGNED FOR HIGH SPEED PRODUCTION RATES

The **Packaging Dynamics, Ltd.** Fully automatic rotary filler has been engineered to accommodate higher speed production, achieving rates as high as **250 containers per minute** for containers ranging as small as **2 oz** to as large as **1 1/2 gallons** depending on machine size, container size and materials.

The **Packaging Dynamics, Ltd.** Rotary Filler can easily be integrated with existing sorting and capping machinery, featuring mechanical inter-locking devices that make operation effortless.

Additional mechanical interlocks can be incorporated into the construction to halt machine operation in the event of a jam. New re-designed drive system allows the machine to run at the higher speed requirements while maintaining a smooth, quiet and trouble free operation. Standard equipment include a variable speed 12 foot conveyor system, product pump and tank. The control package contains a Nema 4 enclosure designed for 230v AC operation that can be washed down easily after each production run. Easy change over and cam adjustments help provide for a minimum of down time.



Frame	A	B	C
R10	40"	48"	144"
R20	60"	60"	144"
R30	72"	72"	144"

### Specifications

#### DESCRIPTION

Container size	2 oz to 1 1/2 gallons
Nozzles available	12 to 48
Construction	Stainless Steel
Controls	Allen Bradley Nema 4 electric logic controls
Frame size	R10=40"x 48"x 88", R20=60"x 60"x 88", R30=72"x 72"x 88"
Overall dimensions	88"H x 144"W x 72" (model dependant)
Air consumption	2 to 3 cfm (with vacuum systems)
Electrical	208-220v AC / 3 / 60 Hz
Weight	Varies 2,000 to 5,000 lbs. Model version dependant